

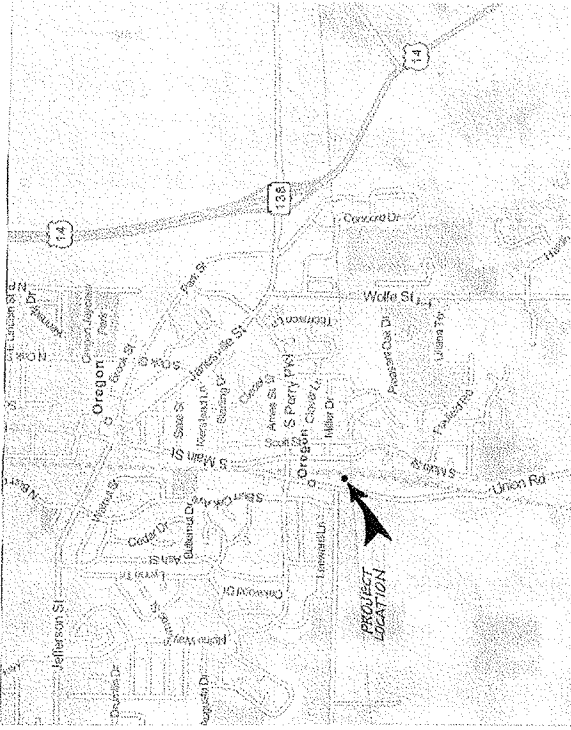
STORAGE CONDOMINIUM PURDIN ENTERPRISES

GENERAL NOTES:

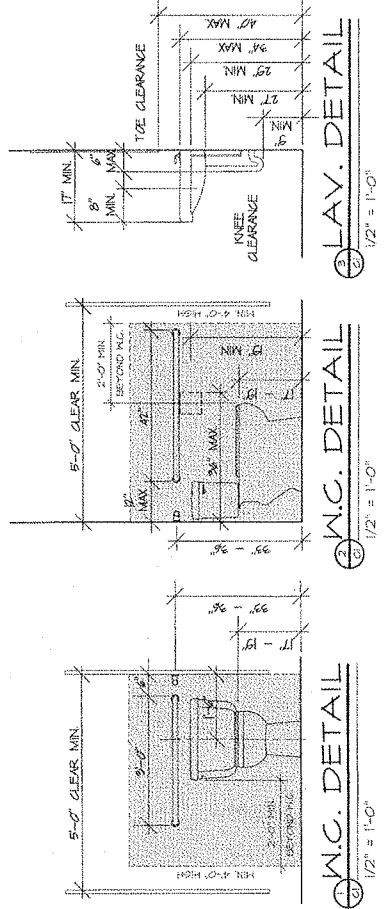
- ROOF TRUSS LOADS
 - TOP CHORD D.L. = 42.0 P.S.F.
 - TOP CHORD L.L. = 5.0 P.S.F.
 - BOTT. CHORD D.L. = 0.0 P.S.F.
 - BOTT. CHORD L.L. = 5.0 P.S.F.
 - TOTAL = 92.0 P.S.F.
 - DURATION FACTOR = 1.15
- SNOW LOADS
 - GROUND SNOW LOAD, $P_g = 60$ P.S.F.
 - IMPORTANCE FACTOR, $I_s = 1.0$
 - EXPOSURE COEFFICIENT, $C_e = 1.0$
 - THERMAL FACTOR, $C_t = 1.1$
- WIND LOADS
 - BASIC WIND SPEED = 90 M.P.H. (3-SEC)
 - WIND IMPORTANCE FACTOR = 1.0
 - WIND EXPOSURE CATEGORY = C
 - INTERNAL PRESSURE COEFFICIENT = ± 0.55 (PARTIALLY ENCLOSED)
- SEISMIC LOADS
 - SEISMIC USE GROUP = 1
 - SPECTRAL RESPONSE COEFFICIENTS
 - $S_d = 0.084$ $S_d1 = 0.042$
 - SITE CLASS = D (PRESUMPTIVE)
 - SEISMIC DESIGN CATEGORY = A
- SOILS DESIGN DATA
 - CLASS OF MATERIALS = 3
 - LOAD-BEARING CAPACITY = 3,000 P.S.F.
- BUILDING CLASS
 - TYPE S1 - MOTOR VEHICLE REPAIR/GENERAL STORAGE
- CONSTRUCTION CLASS
 - TYPE VB - 1 STORY
- FIRE RESISTIVE RATING - GREATER THAN 10' SETBACK
 - WOOD FRAME 0
 - EXT. WALL BRNG. 0
 - INT. WALL BRNG. 0
 - ROOF CONST. 0
 - FLOOR 0
- GROSS SQUARE FOOTAGE
 - TOTAL SQUARE FOOTAGE = 3,000 SQ. FT.
- TOTAL OCCUPANT LOAD = 4
- EGRESS WIDTH
 - OCCUPANT LOAD = 4 MAX.
 - GROSS WIDTH 36 INCHES PROVIDED $\pm 0.2 = 180$ OCCUPANT EGRESS CAPACITY
- EXIT DISTANCE
 - MAX. 200'-0"
- SPRINKLERS NOT REQUIRED
 - FIRE AREA LESS THAN 12,000 SQ. FT.
- PROVIDE FIRE EXTINGUISHERS PER (IFC 906)
- PROVIDE 90-MIN. CONTINUED ILLUMINATION IN CASE OF POWER LOSS (1003.2.11.2)
- PROVIDE EMERGENCY ILLUMINATION IN EGRESS PATH (1003.2.11.1)

NON-ABSORBANT SURFACES

- MINIMUM - SMOOTH, HARD, NON-ABSORBANT SURFACES
- MINIMUM @ WATER CLOSET (SEE SHAD. AREA BELOW)
- MIN. 4'-0" HIGH & MIN. 2'-0" BEYOND FIXTURE



AREA PLAN
N.T.S.



PLAN INDEX	
PAGE NO.	PAGE DESCRIPTION
G1	COVER SHEET - GENERAL NOTES - ANSA PLAN
A1	ELEVATIONS AND CHAIRS
A2	ELEVATIONS
A3	FOUNDATION PLAN
A4	FLOOR PLAN
A5	DETAILS & SECTION
A6	SITE/GRADING PLAN
E1	EMERGENCY EXIT GENERAL LIGHTING PLAN

WILLIAM TURNER CONSULTANT
 18847 BRICKMAN LAKE BL.
 HAYWARD, W. 94543
 PHONE: (754) 634-4559

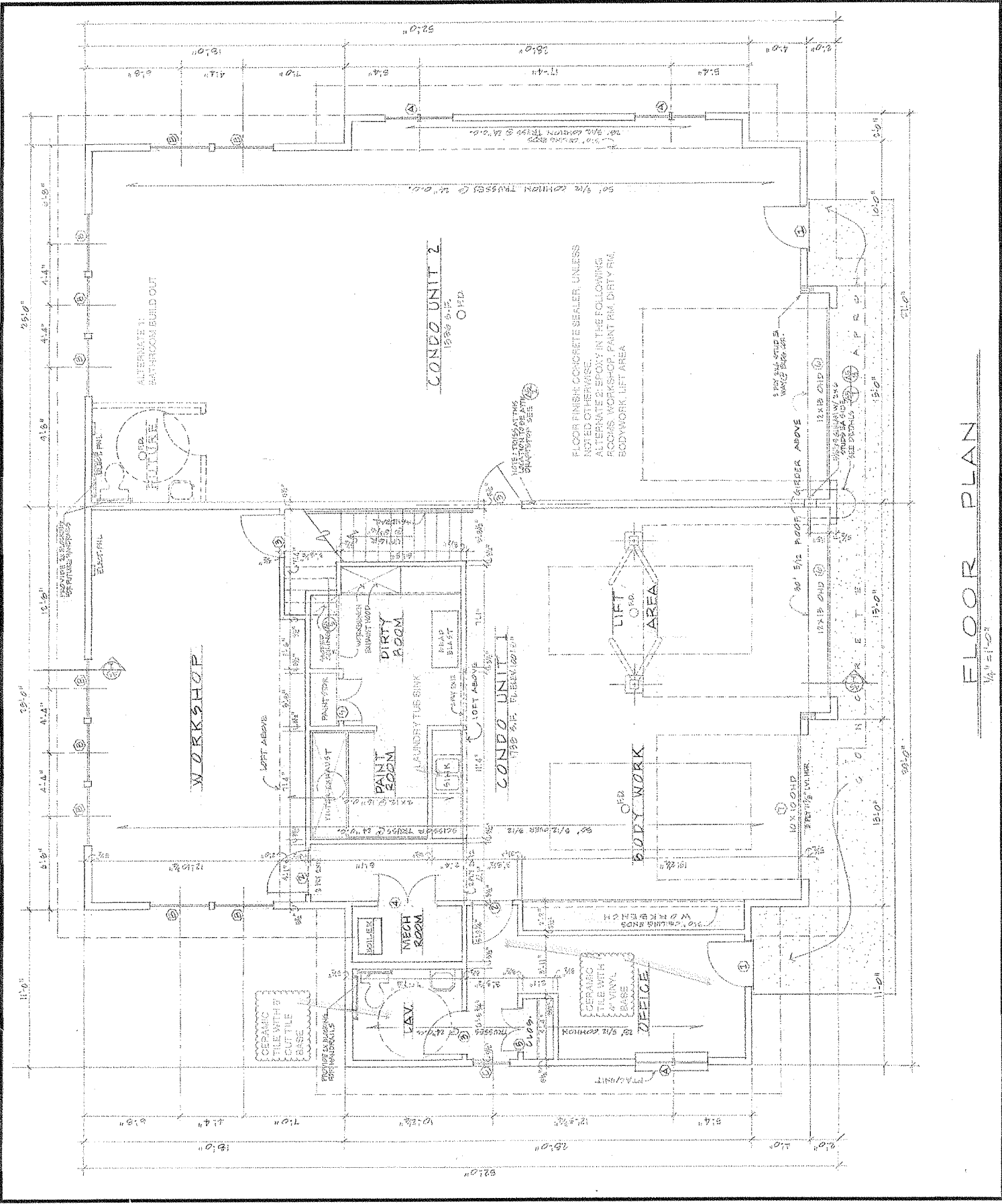
SHEET **61** OF SHEETS

DATE: 3/22/2013
 SCALE: AS NOTED
 DRAWN BY: G.L.N.
 CHECKED BY: P.H.T.

NELSON LUMBER & DESIGN
 2213
 18000 W. 10TH AVE. SUITE 100
 HAYWARD, CA 94543
 TEL: (754) 634-4559
 FAX: (754) 634-4560
 WWW.NELSONLUMBER.COM

STORAGE CONDOMINIUM
 PURDIN ENTERPRISES (PLAN & UNITS)
 OREGON, WISCONSIN

NELSON DESIGN
 18847 BRICKMAN LAKE BL.
 HAYWARD, W. 94543
 PHONE: (754) 634-4559
 WWW.NELSONLUMBER.COM

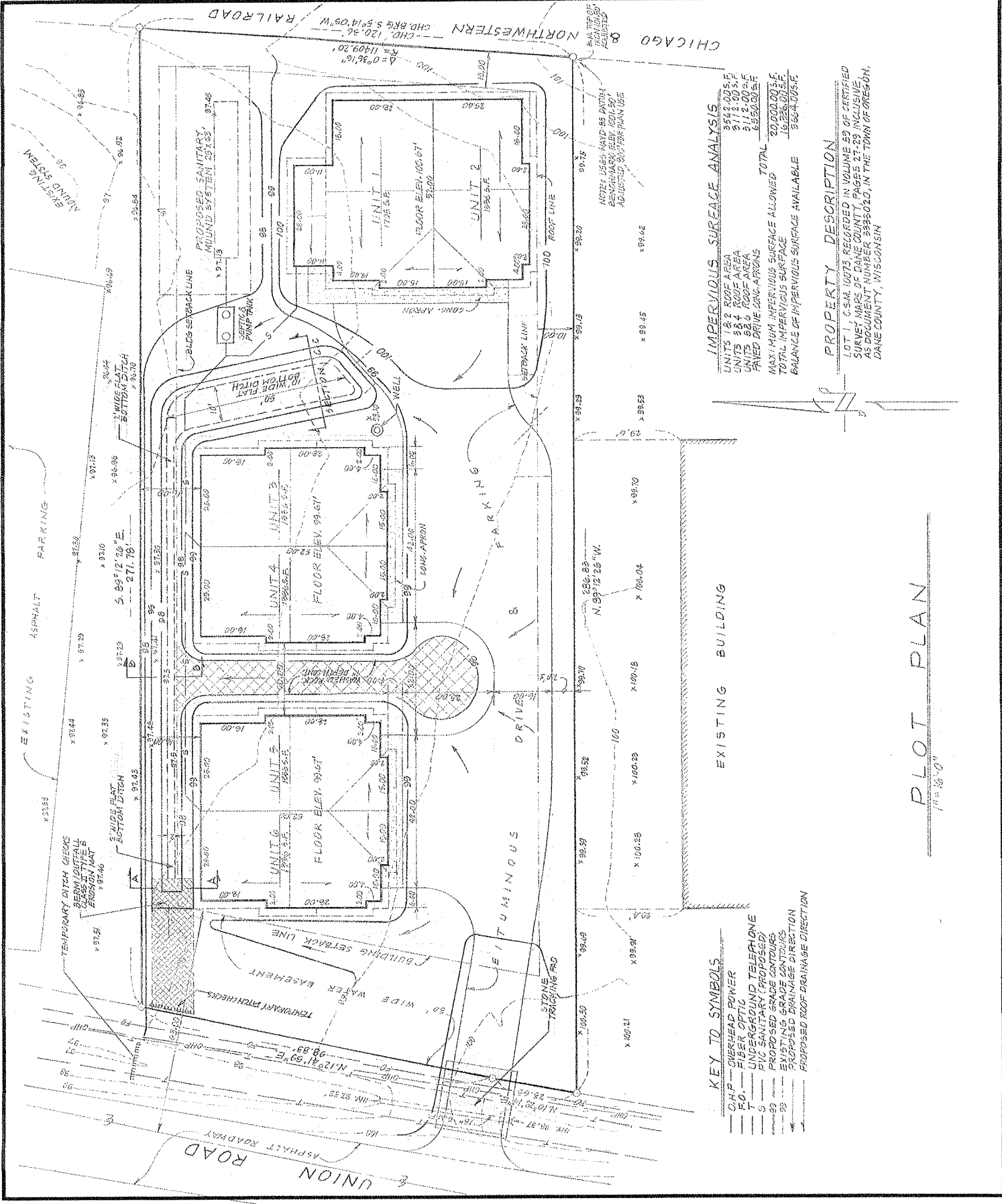


FLOOR PLAN
 1/4" = 1'-0"

PROPOSED STORAGE CONDOMINIUMS
 PLAN "A" (1/2"=1') PLAN "B" (3/4"=1') PLOT PLAN
 FOR PURDIN ENTERPRISES TOWN OF OREGON



SHEET A-6 OF 6 SHEETS
 DATE: 7/24/2013
 REVISION: 7/17/2013
 SCALE: 1"=10'-0"
 DRAWN BY: GAN
 NELSON DESIGN
 1000 W. WISCONSIN AVE.
 MILWAUKEE, WI 53233
 TEL: 414-224-2200
 WWW.NELSONDESIGN.COM



IMPERVIOUS SURFACE ANALYSIS

UNITS 1&2 ROOF AREA	554.00 SF
UNITS 3&4 ROOF AREA	911.00 SF
UNITS 5&6 ROOF AREA	1,050.00 SF
PAVED DRIVE LONG-GRASS	1,000.00 SF
TOTAL	20,000.00 SF
MAXIMUM IMPERVIOUS SURFACE ALLOWED	16,236.00 SF
BALANCE OF IMPERVIOUS SURFACE AVAILABLE	3,764.00 SF

PROPERTY DESCRIPTION
 LOT 1, C.S.M. 10073 RECORDED IN VOLUME 59 OF CERTIFIED SURVEY MAPS OF DANE COUNTY, PAGES 27-29 INCLUSIVE, AS DOCUMENT NUMBER 9986020, IN THE TOWN OF OREGON, DANE COUNTY, WISCONSIN

- KEY TO SYMBOLS**
- OHP --- OVERHEAD POWER
 - FO --- FIBER OPTIC
 - U --- UNDERGROUND TELEPHONE
 - S --- UNDERGROUND SANITARY (PROPOSED)
 - T --- TRENCH
 - PROPOSED GRADE CONTOURS
 - EXISTING GRADE CONTOURS
 - PROPOSED DRAINAGE DIRECTION

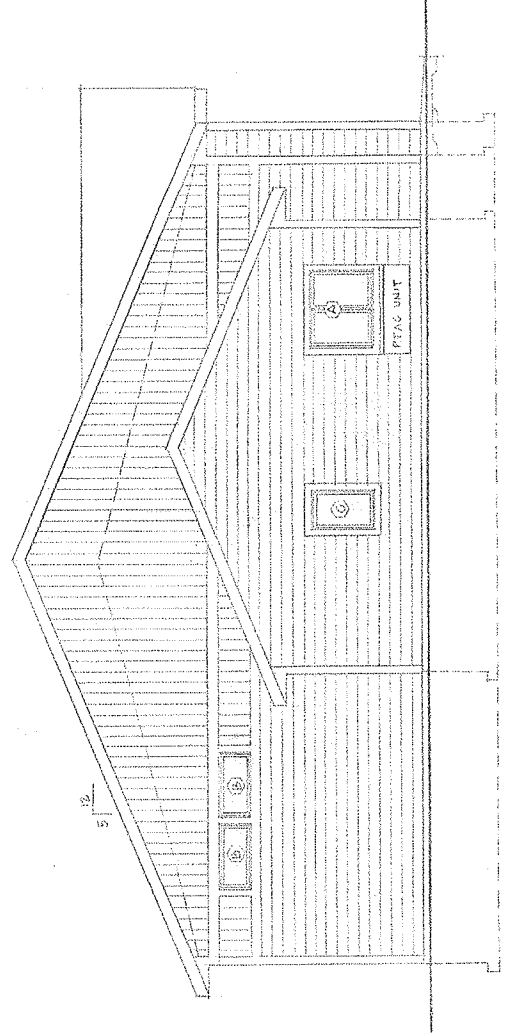
PLOT PLAN
 1/4"=10'-0"

WINDOW SCHEDULE

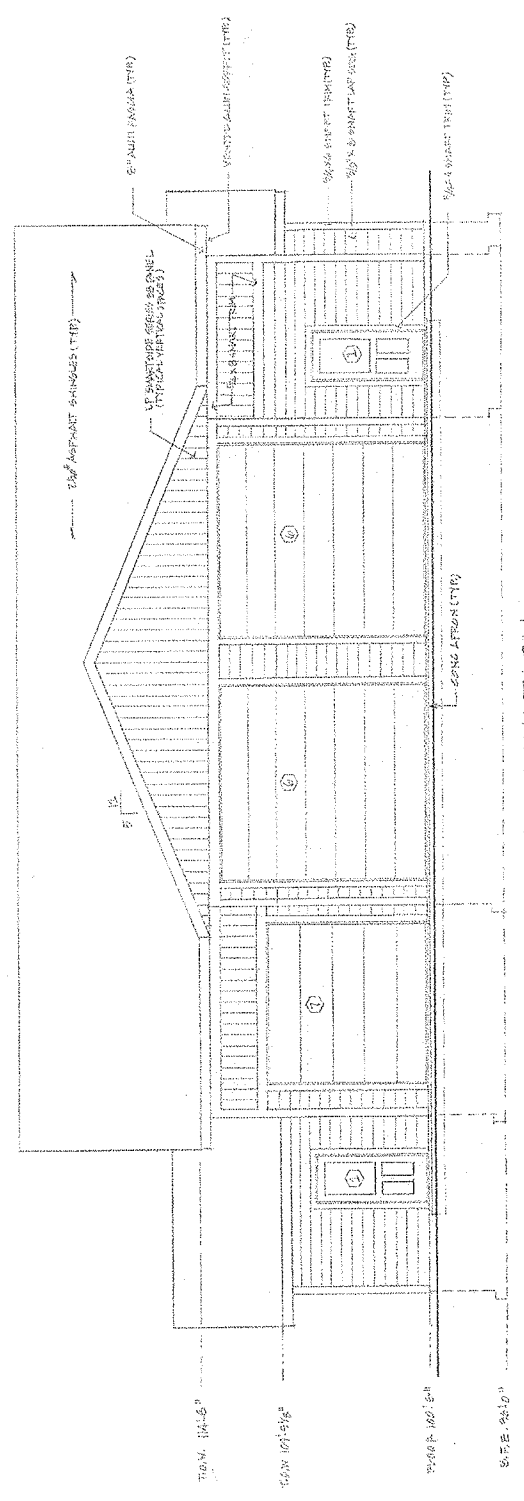
MARKING	UNIT NUMBER	POSITION	FINISH	REMARKS
1	1CA 2647-2	4'-5" x 8'-11 1/2"	MAJOR INTERIORITY	
2	1A1N 4023	4'-1" x 11'-1 1/2"	(LOW HE MASSON)	
3	1CA 0947	2'-5" x 8'-11 1/2"		

DOOR SCHEDULE

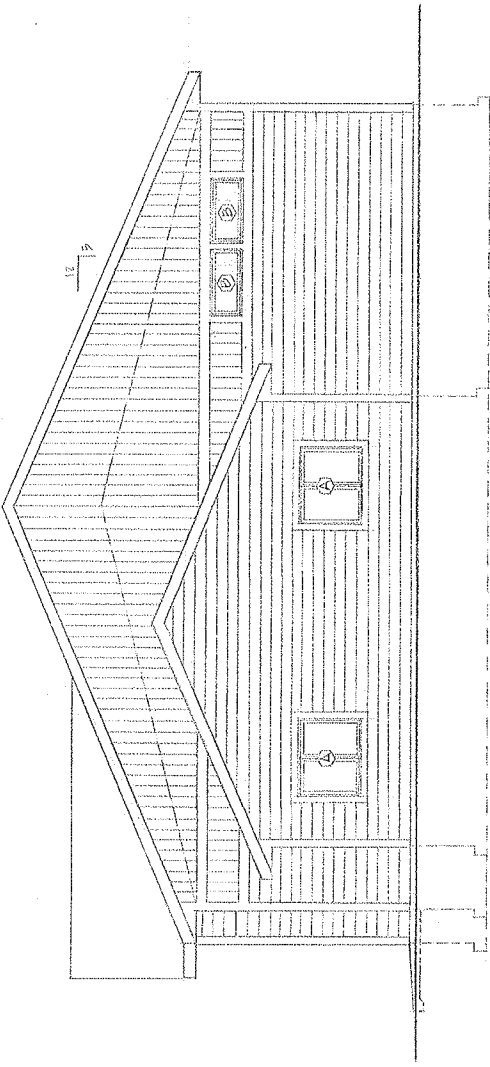
MARKING	UNIT NUMBER	ROUGH OPENING	TYPE	STYLE	REMARKS
1	2008	5'-0" x 8'-0"	60 PH	60 PH	60 PH
2	2008	5'-0" x 8'-0"	60 PH	60 PH	60 PH
3	2008	5'-0" x 8'-0"	60 PH	60 PH	60 PH
4	1	4'-0" x 8'-0"	60 PH	60 PH	60 PH
5	2008	5'-0" x 8'-0"	60 PH	60 PH	60 PH
6	10" x 10"	10" x 10"	60 PH	60 PH	60 PH
7	10" x 10"	10" x 10"	60 PH	60 PH	60 PH



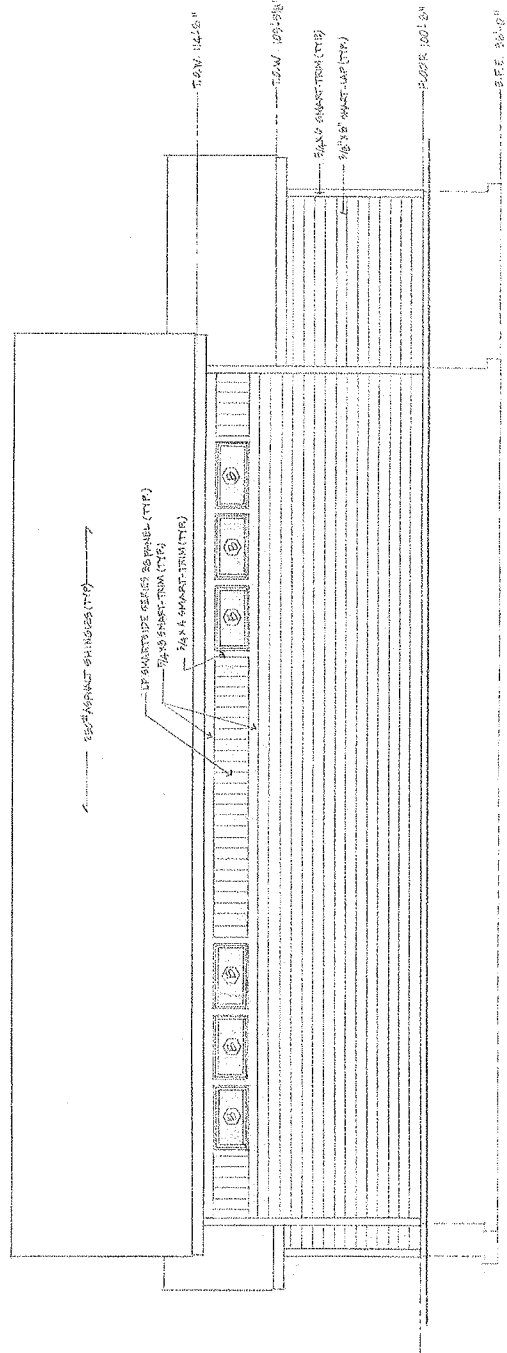
NORTH ELEVATION
5/12 = 10'



WEST ELEVATION
UNIT 1 & UNIT 2



SOUTH ELEVATION
 3/8" = 1'-0"



EAST ELEVATION
 3/8" = 1'-0"

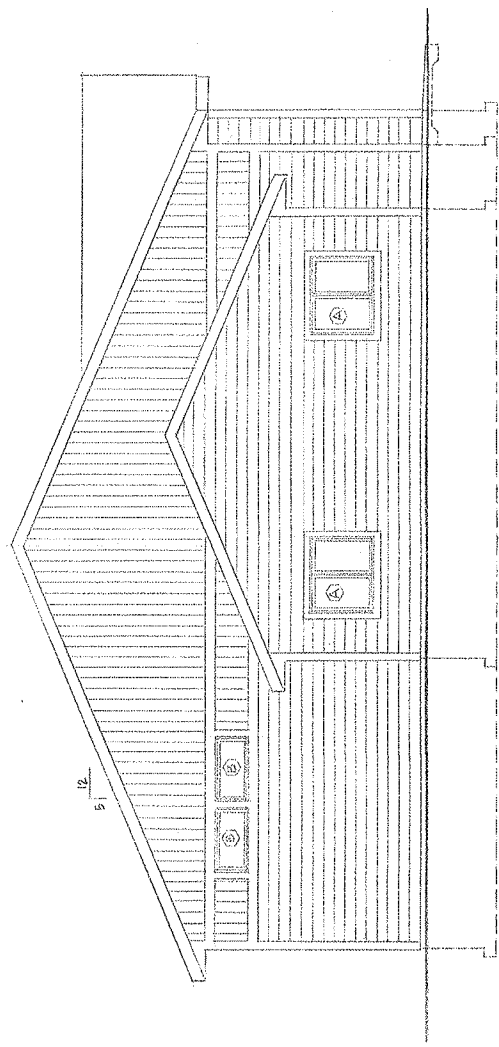
WINDOW SCHEDULE

MARK	QTY	UNIT NUMBER	ROUGH OPENING	FINISH MARKS
Ⓐ	4	10A	4'-9" x 6'-11 1/2"	1/2" LITE
Ⓑ	10	10B	4'-11" x 11'-7 1/2"	1/2" LITE

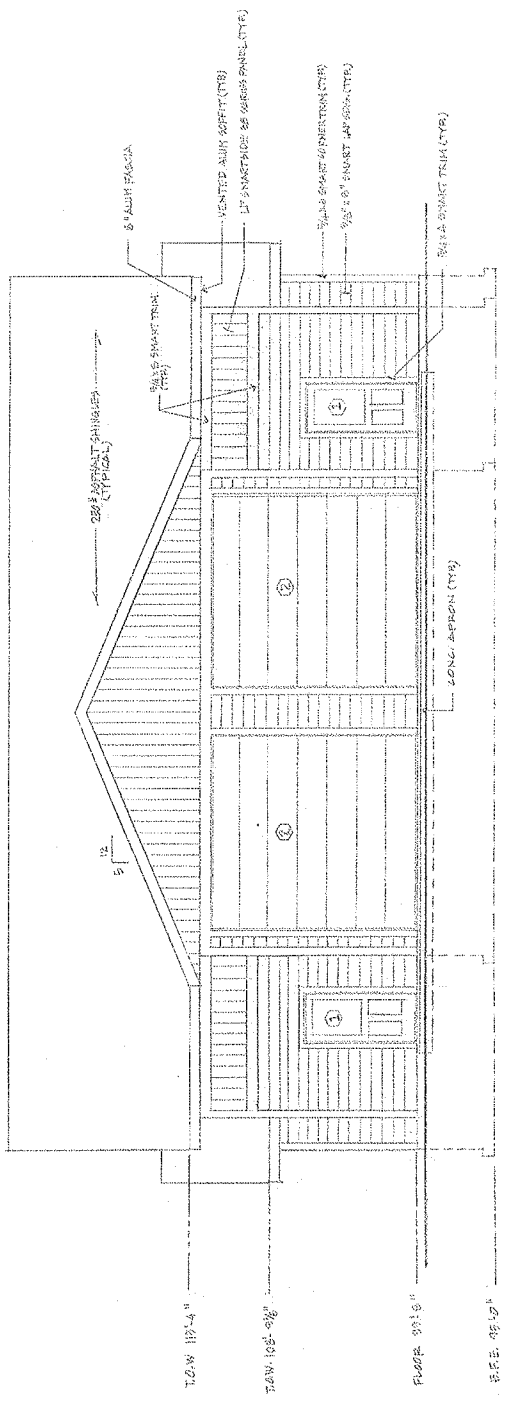
DOOR SCHEDULE

MARK	QTY	DOOR SIZE	ROUGH OPENING	TYPE	STYLE
Ⓐ	2	6'-0" x 8'-0"	6'-0" x 8'-0"	SW	7/8" LITE
Ⓑ	2	12'-0" x 12'-0"	12'-0" x 12'-0"	SW	1/2" LITE

OVERHEAD DOORS TO HAVE A MINI RTIRAS OR EQUIVALENT



WEST ELEVATION
 1/2" = 1'-0"



SOUTH ELEVATION
 1/2" = 1'-0"

SHEET

A-2

OF SHEETS

DATE: 3/28/12

REVISED:

SCALE:

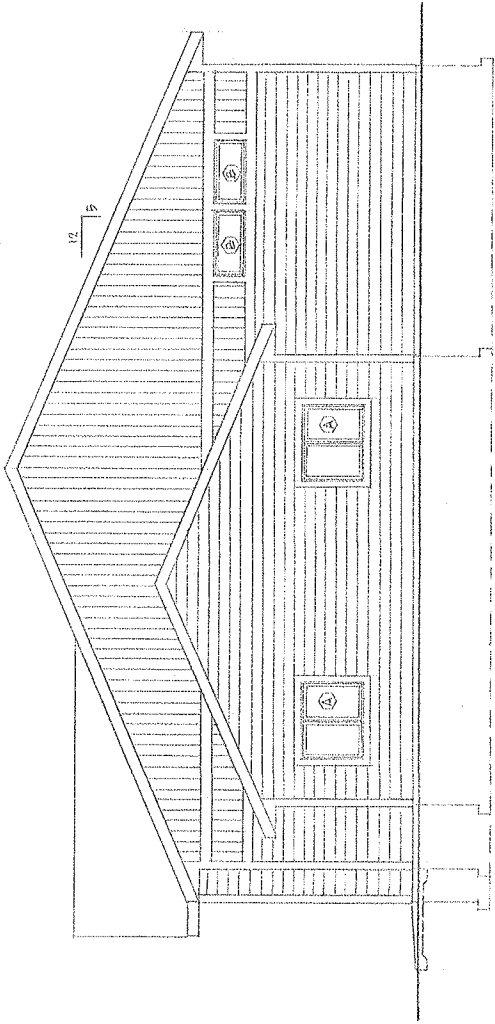
DRAWN BY: GJK

I AM A PROFESSIONAL ARCHITECT
 REGISTERED IN THE STATE OF OREGON
 NO. 100000000000000000000000
 MY EXPIRES ON 12/31/2012
 I AM A PROFESSIONAL ENGINEER
 REGISTERED IN THE STATE OF OREGON
 NO. 100000000000000000000000
 MY EXPIRES ON 12/31/2012
 NELSON LUDWIG & ASSOCIATES
 2012

PROPOSED STORAGE CONDOMINIUMS
 PLAN "B" - ELEVATIONS
 FOR: PURDIN ENTERPRISES TOWN OF OREGON

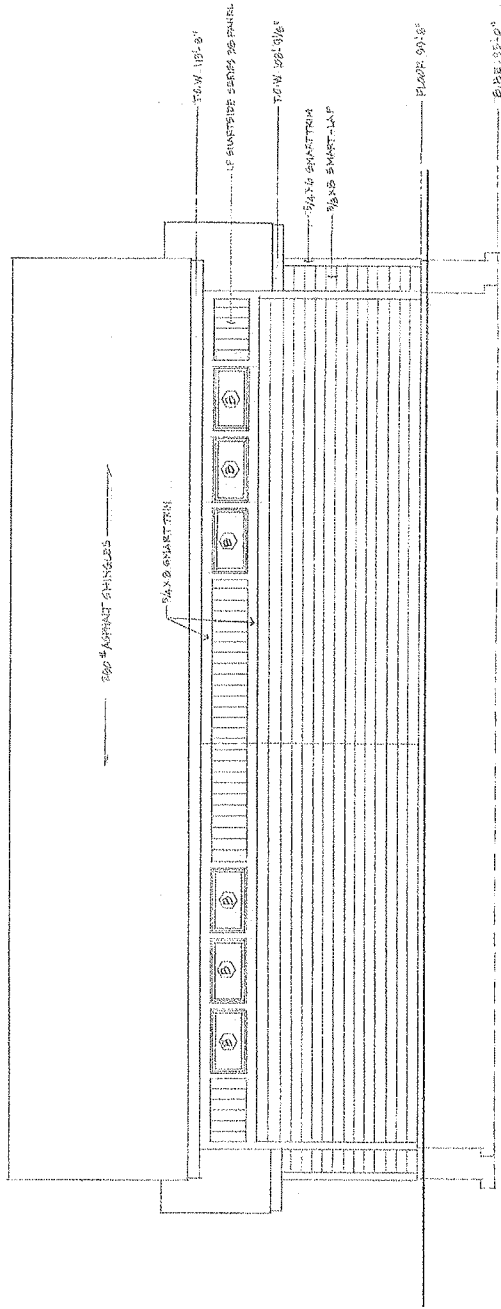


NELSON DESIGN
 1500 N. WESLEY DR.
 HAYWARD, CA 94543
 PHONE: (714) 634-4589
 NELSON@NED.COM



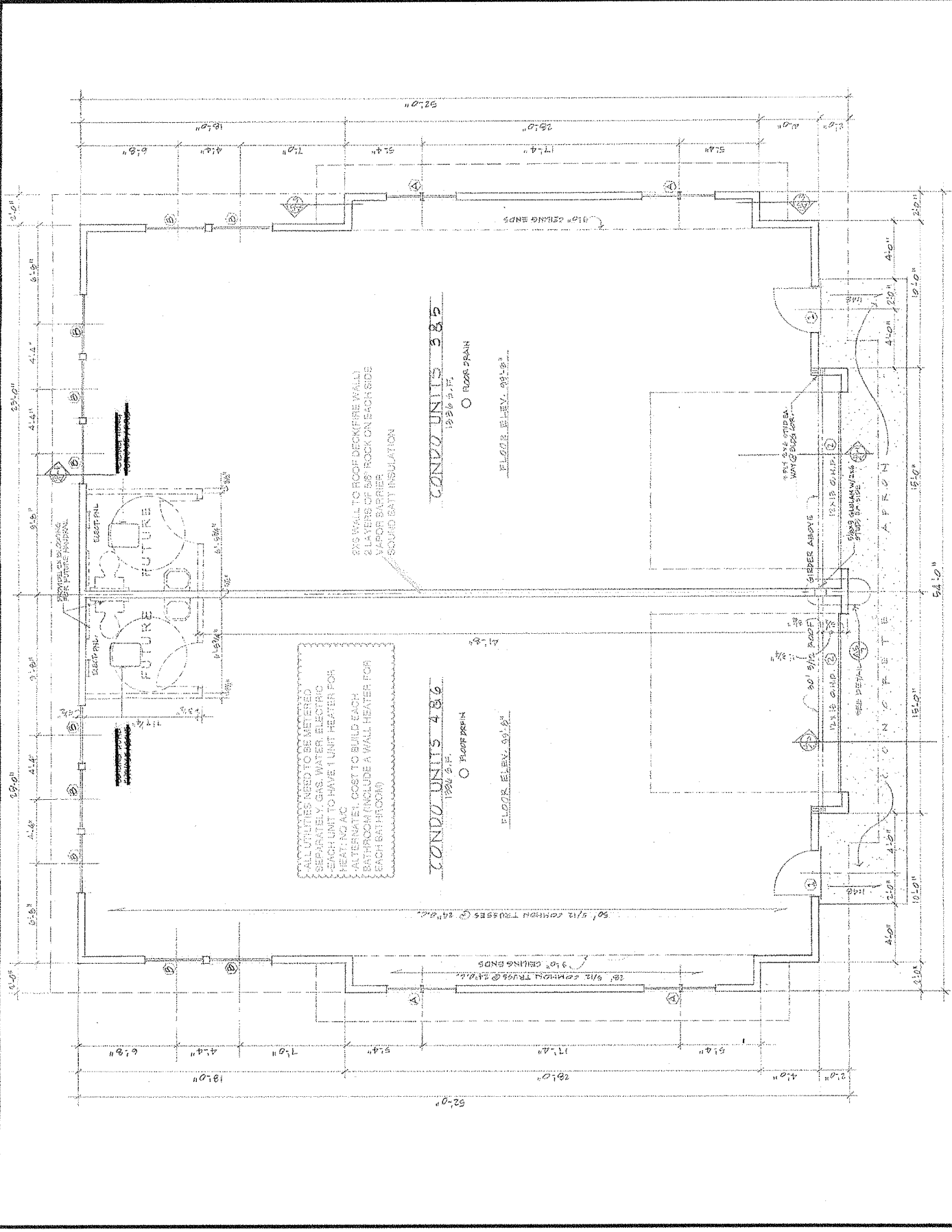
EAST ELEVATION

3/16" = 1'-0"



NORTH ELEVATION

3/16" = 1'-0"



FLOOR PLAN
 1/4" = 1'-0"